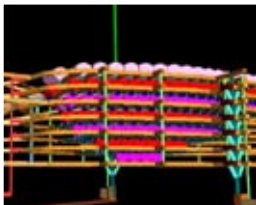


THIRD ANNOUNCEMENT & CALL FOR PAPERS



International Society for Mine Surveying **XIV International Congress** 20-24 September 2010, Sun City, South Africa



www.ism2010.co.za

INVITATION

Honoured Reader,

The International Society for Mine Surveying and the Institute of Mine Surveyors of South Africa cordially invite you to attend the International Society for Mine Surveying XIV International Congress, to be held at Sun City, South Africa on 20 – 24 September 2010. This is the first time that the Congress is hosted in Africa and only the second time that it is hosted in the southern hemisphere.

South Africa is endowed with rich mineral resources and South Africa is the world's largest producer of platinum and until recently was also the world's largest gold producer. Our country is also a significant producer of base metals, coal and diamonds, as well as other minerals such as chromium, vanadium, manganese and uranium. South Africa's strengths include a high level of technical expertise, taking into account the ever-increasing challenges of mining conditions, with the deepest gold mine shafts now nearing four kilometres in depth.

The Congress will serve to advance the science and practice of mine surveying and allied disciplines such as mining, geotechnical and environmental engineering, geology and mineral evaluation. With a current membership of 42 countries, the ISM is expecting participation from many countries, making this an excellent opportunity to share knowledge with international colleagues. The scope of activities addressed by the commissions of the ISM, which guide the themes of this congress, should serve to attract papers and presentations from a diversity of mining professionals. The themes are:

- Education, Legal Issues and History
- Geometry of Mineral Deposits and Mineral Resources Management
- Instruments, Mine Surveying Measurements and Mining Cartography
- Rock and Ground Movements and Subsidence Damages
- Environmental Planning
- Economic Transformation, Sustainable Development, Land Reclamation and New Energy Resources

The focus of the six commissions (above), demonstrate the scope of the activities undertaken by the mine surveyor. These activities may vary from country to country, however, I can say with confidence that internationally, mine surveyors are involved in a very broad spectrum of activities in support of mining enterprise. Some of these activities are undertaken by allied disciplines and have developed into areas of advanced specialisation. For this reason, the ISM has a broad base, drawing members from several disciplines. This diversity is a key strength of the ISM and one of many advantages to participation in the Congress.

May I invite you again to participate in the XIV International Congress of the ISM in South Africa and welcome you to our wonderful country, rich in biodiversity and cultural history.

Wishing you success in sharing and gaining knowledge.

Yours in Mine Surveying,



Michael Livingstone-Blevins
President
International Society for Mine Surveying (ISM)



ORGANISING COMMITTEE

INTERNATIONAL SOCIETY FOR MINE SURVEYING XIV INTERNATIONAL CONGRESS

Sun City, South Africa

20-24 September 2010

THE ORGANISERS OF THE CONGRESS

International Society for Mine Surveying
Institute of Mine Surveyors of South Africa

THE CONGRESS WILL BE HELD UNDER THE AUSPICES OF

Prof Frederick CAWOOD
President Of The Institute Of Mine Surveyors Of South Africa

CHAIRMAN OF CONGRESS ORGANISING COMMITTEE (CONGRESS DIRECTOR)

Mr Alex BALS
Head of Business Planning, Africa Region
– AngloGold Ashanti

CHAIRMAN OF CONGRESS SCIENTIFIC COMMITTEE

Prof Frederick CAWOOD
Head of School: School of Mining Engineering
– University of the Witwatersrand

CHAIRMAN OF AWARDS COMMITTEE FOR YOUNG AUTHORS

Prof Dr Axel PREUSSE
Vice President of the ISM



SPONSORS

The organising committee is proud to announce the following sponsors:

Principal Sponsor

Leica Geosystems



Platinum Sponsor

Anglo American



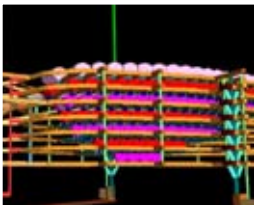
Platinum Sponsor

Trimble



Gold Sponsor

Anglo Gold Ashanti



CONGRESS PROGRAMME

CONGRESS THEMES

The themes for the Congress in 2010 will be based on the ISM Commissions:

- Education, Legal Issues, Web-presentations, History
- Geometry of Mineral Deposits / Mineral Resources Management
- Instruments, Mine Surveying Measurements, Mining Cartography
- Rock and Ground Movements, Subsidence Damages
- Environmental Planning
- Economic Transformation, Sustainable Development
- Land Reclamation, New Energy Resources

PROVISIONAL PROGRAMME OUTLINE

Monday 20 September 2010

Registration Opens
Optional Golf Day
Excursion
Opening Ceremony
Welcome Dinner

Tuesday 21 September 2010

Official Congress Opening
Plenary Sessions
Satellite Meetings
Parallel Session
Exhibitors Evening

Wednesday 22 September 2010

Technical Tour

Thursday 23 September 2010

Plenary Sessions
Parallel Sessions
Satellite Meetings
Gala Dinner

Friday 24 September 2010

Members Assembly
Closing Ceremony
Departure



CALL FOR PAPERS

CONGRESS LANGUAGE

The main language of the Congress is English.

Russian language papers and presentations will be accommodated (see below for “Instructions to Authors for the Presentation of Papers”).

SCIENTIFIC PROGRAMME OF THE CONGRESS

The themes for the Congress in 2010 will be based on the ISM Commissions:

- Education, Legal Issues and History
- Geometry of Mineral Deposits and Mineral Resources Management
- Instruments, Mine Surveying Measurements and Mining Cartography
- Rock and Ground Movements and Subsidence Damages
- Environmental Planning
- Economic Transformation, Sustainable Development, Land Reclamation and New Energy Resources

INSTRUCTIONS TO AUTHORS FOR THE PRESENTATION OF PAPERS

All papers should have an English title and Abstract.

In accordance with the decision made at the 36th Presidium Meeting of the ISM, the language of the XIV International Congress is English. There is no provision for the services of a translator at the Congress.

Russian speakers are requested to translate presentation slides into English. This will enable presentation in Russian to be followed by English speaking participants.

Participants are invited to submit papers related to the scientific themes of the Congress in English or Russian to the ISM Presidium Member(s) of their country.

The ISM Presidium Member(s) representing their country will organise the qualification of the papers in their country based on the Qualification Form accepted by the ISM Presidium Members. Only papers that qualify are to be forwarded to the Congress Scientific Committee for presentation and/or publication at the Congress.

The papers should be marked with the following qualifications:

- It is new in theory (A)
- It is new in practice (B)
- It can be published in the Proceedings of the ISM Congresses (C)

All abstracts should also be submitted in English and in electronic form via e-mail to Professor F T Cawood, Chairman of the Congress Scientific Committee (Frederick.Cawood@wits.ac.za) by **01 May 2010**.

Where the country of an author is not represented on the ISM, the paper(s) should be sent directly to the Congress Organising Committee (Frederick.Cawood@wits.ac.za).

The Congress Organising Committee will put the Proceedings of the XIV International Congress onto a CD (or other suitable electronic medium).

THE FOLLOWING STRICT RULES APPLY TO THE FORMAT OF PAPERS:

- **Volume:** max. Five (5) A4 pages including the abstract.
- **Margins:** top – 2.5 cm, bottom – 3.0 cm, left – 3.0 cm, right – 2.5 cm.
- **Text:** Times New Roman, font size – 9 pt, single spaced, justified (to the side-margins).
- **Title:** Times New Roman, in bold type, font size – 14 pt, single spacing and central positioning, the first letter is upper-case (capital letter).
- **The author's name, organisation and country/nationality:** under the title, separated by a blank line, Times New Roman, font size – 9 pt.
- **Abstract:** In English. No more than 150 words. A blank line is needed under the data related to the author(s), Times New Roman, font size – 9 pt, single spaced, justified (to the side-margins).
- **Key words:** 3 to 4 words, Times New Roman, font size – 9 pt.
- **Headings:** Blank lines must be left above and below the heading, Times New Roman, bold type, font size – 9 pt. Start all headings in upper-case (capital letter).
- **Body of the paper:** Times New Roman, font size – 9 pt, justified, single spacing.
- **Photographs, figures, tables and formulae:** insert these in the body of the text, leaving a blank line above and below, and number these uniformly, e.g. Figure 1 or Table 1. The name of a Figure should appear below and centre of the figure. Formulae should be numbered consecutively, set the number in brackets, e.g. [1], and match it near the right margin of the printed area. Corresponding text must refer to the Photograph, Figure, Table or Formula.
- **References:** the format of references (Times New Roman, font size – 9 pt.) is as follows:
 - o Reference to articles in Journals should be given as follows:
 1. Sladková, D; Vrubel, M. GPS Technology for Bucket Wheel Excavators. Markscheiderwesen 116 (2009), Nr.1, pp 22-25. ISSN 0174-1357
 - o Reference to articles in publications should be given as follows:
 2. van Zyl, D. Open pit closure Guidelines for Open Pit Slope Design. Read, J. and Stacey, P. (Editors). CSIRO Publishing, Australia, 2009. Pp 401- 403. Include ISBN number, if applicable.
 - o Reference to papers presented at conferences or congress should be given as follows:
 3. Powell, G.T.; Leighfield, K. Mining Subsidence and Legal Remedies in Britain. Proceedings of the 13th International Congress of the International Society for Mine Surveying, Budapest, Hungary. The International Society for Mine Surveying, 2007.

DEADLINE FOR RECEIPT OF QUALIFIED PAPERS

The deadline for receipt of the Qualified Papers by the Congress Scientific Committee is 01 August 2010.



GENERAL INFORMATION

DATE & VENUE

The XIV International Congress will take place on 20 September to 24 September 2010 at Sun City, South Africa.

Nestled in the rolling hills of the Pilanesberg Mountains in the North West Province, 2 hours drive from OR Tambo International Airport, lies one of South Africa's most scenic locations. Sun City is a world unto itself and has earned its reputation as Africa's Kingdom of Pleasure.

Whatever you want, you will find it at Sun City. From sizzling entertainment, world-class casinos and restaurants, which cater for all tastes, to more relaxed poolside venues, quiet places, lush gardens and extensive sporting facilities - including two world-class golf courses.

For further information on Sun City, please visit: www.suninternational.com/resorts/suncity/

LANGUAGE

Although there are 11 official languages in South Africa, English is the country's business language and all signage is displayed in English.

The official Congress language is also English.

EXHIBITION

A high profile trade exhibition open to institutions and supporting services will be held simultaneously with the Congress. All refreshment breaks, lunches and an exhibitors evening will be held in the exhibition area. To view exhibition floorplan or for more information please visit the congress website.

Should any organisation be interested in exhibiting please contact:

Dee Reuvers (Managing Director)
NichePro (Pty) Ltd
Tel: +27 11 262 6458
Fax: +27 11 444 9031
Email: deer@nichepro.co.za
Website: www.nichepro.co.za

SPONSORSHIP OPPORTUNITIES

The organising committee has designed sponsorship packages that will offer excellent value for money for interested parties. Sponsorship packages can be viewed on the website or if you need more information, please do not hesitate to contact the Congress Secretariat on ism2010@globalconf.co.za or +27 11 676 3457.



REGISTRATION

The registration fees are as follows:

Delegate Registration Fees

| | |
|---|---------|
| Early Bird Registration (1 February 2010 – 31 May 2010) | R 7 500 |
| Standard Registration (1 June 2010 – 6 September 2010) | R10 000 |
| Day Delegate | R 2 000 |

Accompanying Persons Registration Fees

| | |
|---|---------|
| Early Bird Registration (1 February 2010 – 31 May 2010) | R 2 000 |
| Standard Registration (1 June 2010 – 6 September 2010) | R 3 000 |

Student Registration Fees

| | |
|--|---------|
| Standard Registration (1 February 2010 - September 2010) | R 3 500 |
|--|---------|

Day Delegate

R 2 000

(Only valid for two days per person, please note that this includes the social function if applicable; only applicable for South Africans)

Please view the congress website www.ism2010.co.za for updates on the programme and registration. We will be sending out an invitation to register to attend the International Society for Mine Surveying XIV International Congress in February 2010. Please look out for this documentation.

ACCOMMODATION & TRANSPORT

Special group rates are available with various hotels at Sun City and in the surrounding areas in order to ensure that all delegates will enjoy competitive rates at a variety of luxury and budget hotels.

Airport transfers from OR Tambo International (Johannesburg) to Sun City are available to delegates at an additional cost and on request.

| HOTEL | ROOM TYPE | DOUBLE | SINGLE |
|-------------------|----------------------|---------|---------|
| Cabanas | Standard Twin Room | R 1 617 | R1 497 |
| | Standard Family Room | R 1 950 | R 1 830 |
| Cascades | Standard Room | R 2 383 | R 2 236 |
| | Luxury Room | R 2 795 | R 2 649 |
| The Palace | Standard Room | R 3 986 | R 3 773 |

The rates quoted above are in South African Rand, per room, per night inclusive of English breakfast and VAT (Value Added Tax).

Please view the congress website www.ism2010.co.za for accommodation options around Sun City.

SOCIAL EVENTS

The Organising Committee is in the process of finalising the social programme and at this stage will be hosting a Welcome Dinner as well as an Exhibitors Evening and a Gala Dinner. More details will follow with other optional social functions, which will be available to delegates attending the congress.

Accompanying person's tours, pre and post tours as well as technical tours are available for delegates that will be attending. Please look out for more details on the congress website.

LOCAL ORGANISING COMMITTEE

| | |
|-----------------------------------|---|
| Finance and Sponsorship | Alex Bals Anglo Gold Ashanti |
| Logistics | Colin Bennett Private Consultant |
| Marketing & Publicity | Dennis Rae Department of Mineral Resources |
| Scientific Programme | Fred Cawood University of Witwatersrand |
| Technical Tours | Udo Pfafferott Exxaro |
| Professional Conference Organiser | Esmare Cloete Global Conferences Africa |
| Professional Conference Organiser | Donne Holmes Global Conferences Africa |

ENQUIRIES / INFORMATION

Congress Secretariat:
Global Conferences Africa (Pty) Ltd
P O Box 651817,
Benmore, 2010
Tel: +27 11 676 3457
Fax: +27 11 884 1603
Email: ism2010@globalconf.co.za

